

3D ANATOMY FOR SPEECH LANGUAGE PATHOLOGY DVD-ROM



Aimed at speech and language specialists in practice, teaching and training, this new electronic resource, created in collaboration with a team of expert clinicians and educators, includes relevant and detailed interactive 3D anatomy views, with a comprehensive clinical section and an invaluable patient education section.

Hundreds of 3D anatomy views cover the anatomy most relevant to you. The anatomy of the head and neck including facial muscles, tongue, oronasal cavities, larynx, pharynx, ear and nerves are included in unsurpassed detail, with supplementary content on basic anatomical language and systems of the human body also provided.

It also contains 3D animations of movements of the face (such as elevation/depression of the corners of the mouth and opening/closing of the lips), movements of the larynx/pharynx, movements of the TMJ and respiration, as well as fantastic 2D animations covering mechanisms of swallowing, mechanisms of articulation and voice, mechanisms of voice production including the mucosal wave and actions of the larynx.

Clinical content covers normal functional anatomy, with both written descriptions and visual representations of the mechanisms of swallowing, mechanisms of voice production and mechanisms of articulation, as well as topics such as cleft palate, vocal fold paralysis, spasmodic dysphonia, swallowing problems after stroke and swallowing problems after cancer among many others.

The invaluable patient education section includes useful editable and printable sheets. With patient orientated text and clear, annotated illustrations, each sheet includes an appropriate description of the anatomy and nature of each condition.



BENEFITS

- Give yourself the edge – this software is unique - there are very few digital resources available for speech language pathologists, making it an invaluable reference tool!
- View relevant anatomy in a new perspective through interactive and 3D modeling- interactive functions allow you to rotate the 3D models 360 degrees and add or remove layers of anatomy to view and label any structure with ease.
- Educate and reassure your patients to help them get the most from consultations by utilising the dedicated and editable patient education sheets.
- Clear 2D animations of the mechanisms of articulation and voice production, including lip and tongue positions in all vowels and consonants as well as the mucosal wave and the four phases of swallowing
- Save valuable time finding images – simple edit functions allow you to export and print any image for your own presentations, royalty free

3D ANATOMY SECTION:

- Anatomical Language
- Skeletal System
- Muscular system
- Heart – including chambers of the heart
- Brain – including meninges, dural folds and sinuses, ventricles, brainstem, cerebellum, cerebrum, motor and sensory homunculi, basal ganglia, limbic system and vessels
- Spinal cord – including cross section and tracts
- Nervous system – including cervical plexus and brachial plexus
- Respiratory System
- Muscles of facial expression
- Muscles of mastication
- Muscles of swallowing
- Pharynx and larynx – with a collection of 10 new muscle atlas views covering the muscles of the larynx
- Oral cavities – including tongue, right TMJ, palate, floor of oral cavity, dentition and paranasal sinuses and oronasal cavities
- Abduction/Adduction of the vocal cords
- Sliding of the arytenoids
- Rotation of the thyroid
- Cervical fascia
- Cranium – including individual bones
- Ear – including external, middle and inner ear and cochlea cross section
- Cranial nerves – including olfactory nerve, optic nerve, oculomotor nerve, trochlear nerve, trigeminal nerve, abducens nerve, facial nerve, vestibulocochlear nerve, vagus nerve, accessory nerve, hypoglossal nerve
- Surface anatomy

Head Office

Primal Pictures Ltd

4th Floor Tennyson House, 159-165 Great Portland Street, London W1W 5PA. United Kingdom

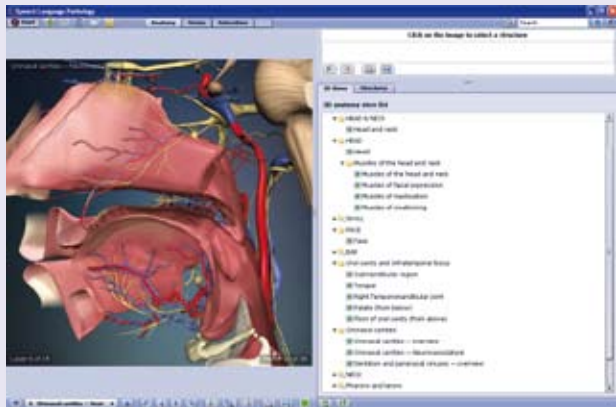
Telephone: +44 (0) 20 7637 1010 Fax: +44 (0) 20 7636 7776

CLINICAL SECTION:

Clinical text is provided by a team of clinical authors. The text contains background, clinical presentation and evaluation, adverse impact on function and management for each condition. Topics include normal function (such as mechanisms of swallowing, mechanisms of voice production and mechanisms of articulation). Conditions include hemorrhage, acute laryngitis, vocal fold paralysis, dysphonia, neoplasms, granuloma, swallowing problems after stroke, swallowing problems after cancer, cleft lip and palate and saccular cysts amongst others.

PATIENT EDUCATION SECTION:

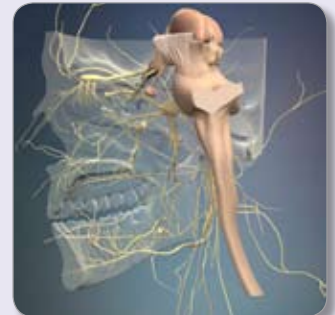
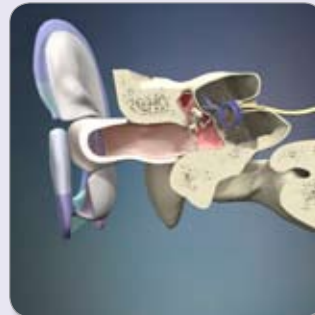
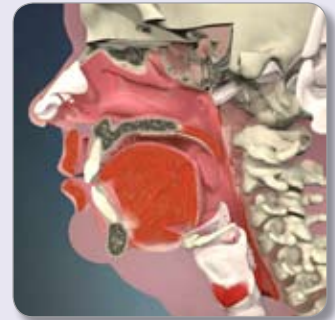
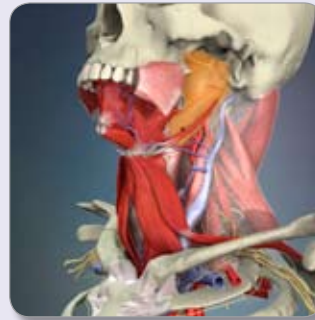
There is a fantastic patient education section to complement the topics covered in the clinical section. Each sheet is printable and editable and includes background, information on the condition, treatment and advice plus appropriate patient-friendly images and diagrams.



ANIMATION SECTION:

This section includes relevant 3D animations including those illustrating movements of the face (such as elevation/depression of the corners of the mouth, opening/closure of the lips and pursing of the lips), movements of the larynx/pharynx (such as elevation/depression of the hyoid bone), movements of the TMJ (including elevation/depression, lateral movement and protrusion/retraction) and respiration.

There are also stunning 2D animations of articulation mechanisms, including 24 of consonants and 18 of vowels.



AUTHORS:

Anatomy editors:

Prof Martin E Atkinson B.Sc., Ph.D., Professor of Dental Anatomy Education, School of Clinical Dentistry, University of Sheffield

Prof Stephen McHanwell B.Sc., Ph.D., Professor of Anatomical Sciences, School of Dental Sciences, Newcastle University

Richard Tunstall M.B.B.S., Ph.D., Lecturer in Anatomy, Faculty of Medicine & Health Sciences, The University of Nottingham

Clinical editors:

Peter C. Belafsky, M.D., M.P.H., Ph.D., Director of Voice and Swallowing, Dept of Otolaryngology/HNS, US Davis Health System

Margaret Coffey, MS, CCC-SLP, Department of Speech and Language Therapy, Charing Cross Hospital

Mr Declan Costello, MA, MBBS, FRCS (ORL-HNS)

Marina Gilman M.M., M.A., CCC-SLP, Emory Voice Center, Department of Otolaryngology Head/Neck Surgery, Emory University, Voice Movement Integration Studio

Nancy Lewis, Clinical Coordinator, Division of Otolaryngology, Univ. of Alabama at Birmingham

Yumi A. Sumida MFA MS CCC-SLP, Speech-Language Pathologist, UVA Therapy Services Department of Speech-Language Pathology, University of Virginia Medical Center

If you have any further queries regarding the content of this DVD-ROM,
please contact us emma@primalpictures.com