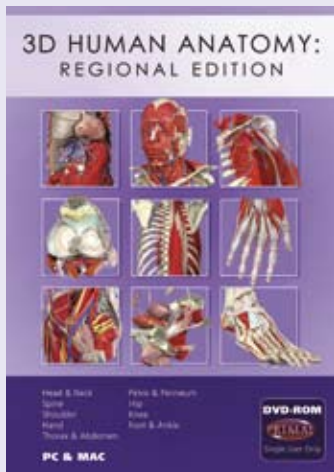


3D HUMAN ANATOMY: REGIONAL EDITION DVD-ROM – 2009 RELEASE



The most detailed and accurate regional 3D anatomy software just got better!

Having completed the revision of all the titles from our regional anatomy series, we are pleased to announce the 2009 release of the 3D Human Anatomy: Regional Edition DVD-ROM (formerly known as Complete Human Anatomy).

The focus of the content is highly detailed, labeled anatomy in 3D from head to foot with extensive anatomy text and links to many additional images and video clips. Built from real anatomy data, each model has a choice of 3D views with interactive functions so you can fully rotate any model 360 degrees, add and remove layers of anatomy from skin to bone and label any structure.

Simple edit functions allow you to copy, paste or print any image or animation to use in your own educational presentations and handouts royalty free (for non-commercial, private use).

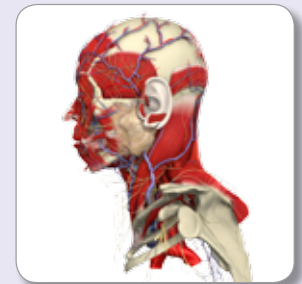
In addition to the interactive 3D models, you can also compare labeled cross sections of the 3D anatomy models to MRI in 3 planes and many layers. Other anatomy content includes high resolution dissection slides, annotated diagrams, clinical slides and animations.

Comprising 9 highly detailed and interactive anatomy models, this comprehensive 3D anatomy atlas and image library includes:

Interactive Head & Neck

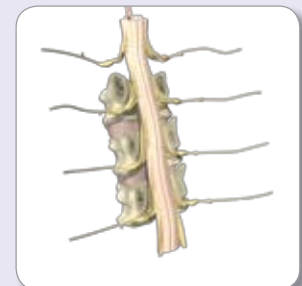
All structures and musculature of the head and neck are covered in detailed 3D. Choose from anatomy views including detailed models of the head, neck and face and individual views of the pharynx, larynx, anterior neck and the basic structure of eyes, ears, gums, teeth and craniofacial region.

All structures have accompanying text and links to additional images and video clips clinical slides, X-Rays, high resolution dissection slides, surface anatomy video clips and 10 function animations showing of the TMJ.



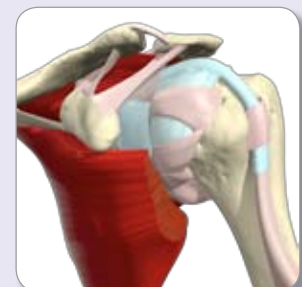
Interactive Spine

3D models include all individual anatomical features of the entire vertebral column – choose views of the entire spine or focus on the vertebral column, thoracic spine, lumbar spine, sacral spine, spinal cord or surface features and bone regions.



Interactive Shoulder

A choice of 3D models includes all areas of the shoulder joint and shoulder girdle. In collaboration with Johns Hopkins University there are a remarkable series of bio-mechanical animations showing the relative bone positions during a number of typical joint motions.



Interactive Hand

View all anatomy from the elbow downwards in detailed 3D; elbow, forearm, hand, wrist and palm, digits and brachial plexus. The title also covers an extensive list of animations including abduction/adduction of the MCP Joints, flexion/extension of the individual fingers, flexion/extension of the wrist, radial and ulnar deviation of the wrist and protraction/retraction of the scapula.

Head Office

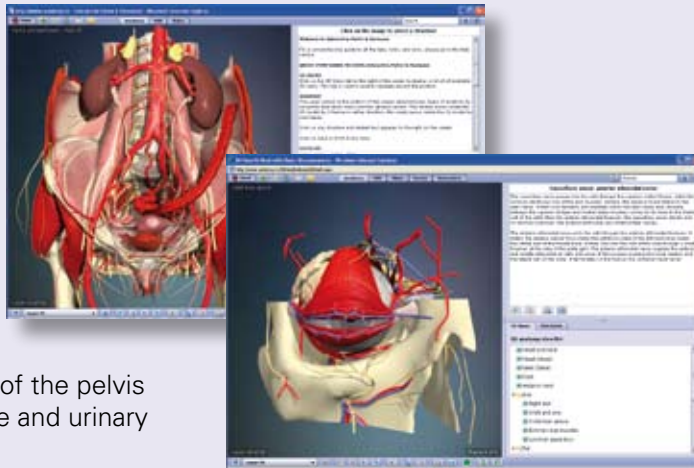
Primal Pictures Ltd

4th Floor Tennyson House, 159-165 Great Portland Street, London W1W 5PA. United Kingdom

Telephone: +44 (0) 20 7637 1010 Fax: +44 (0) 20 7636 7776

Interactive Thorax & Abdomen

View clear and accurate 3D modeling of the key anatomy of the thorax and abdomen. Choose from highly detailed and labeled views of the thorax, abdomen, internal organs (heart, lungs, intestines, diaphragm and liver), surface features and bone regions.

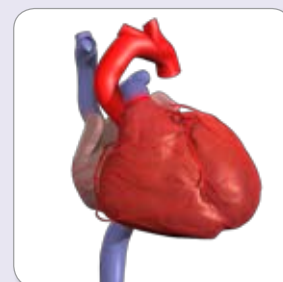


Interactive Pelvis & Perineum

Covering both male and female anatomy, view all anatomy relevant to the pelvis and perineum. 3D models include all individual anatomical features of the pelvis and perineum and internal organs of the reproductive and urinary systems, including the rectum and kidneys.

Interactive Hip

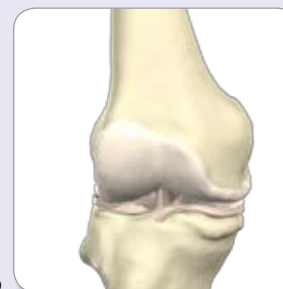
View clear, detailed and accurate 3D modeling of the key anatomy of the hip and acetabulum. Choose from hundreds of highly detailed and labeled views of the hip joint, pelvis, thigh, lumbar plexus, sacral and coccygeal plexuses, surface features and bone regions.



Interactive Knee

The Interactive Knee presents full knee anatomy in three dimensions. The model is based on a very high resolution interactively labeled MR. Views include an overview and close up of the knee, knee joint, popliteal fossa and tibial menisci.

The disc also contains spectacular animations that feature a biomechanical model of the knee in 3D and coverage of surgical procedures which include ACL and PCL ligament reconstruction, meniscus tears and their repair



Interactive Foot & Ankle

View the foot, ankle and lower leg in detailed 3D with this teaching, training and reference tool. 3D models include all individual anatomical features of the leg below the knee, including leg, ankle, foot (covering the heel, tarsus and metatarsus, toes and sole dissection), bone regions and surface features. Peel away layers of anatomy from skin to bone and rotate the model at any stage to view and identify any anatomical structure.

New for 2009

We have also completely redesigned the interface based on user feedback to make it more intuitive and user friendly. Enhancements to the look, feel and functionality include:

- In the 3D anatomy section we have improved functionality for viewing and interacting with the 3D models with an easier to use 3D views menu, better zoom function, rotation shortcuts and flip image functions.
- In addition to structure labels, view a list of all the structures in any chosen view. Select a structure from the list to highlight it on the model.
- Easier to find and use edit functions allow you to quickly print or save an image, movie clip, animation or text article.
- Larger viewing pane for 3D images and animations.
- Refreshed background color.
- In MRI section, a new function shows you the best 3D anatomy view for any structure clicked on, click on the thumbnail image to be taken directly to that structure on the 3D model.
- 3D muscle function animations have been newly labeled and can be exported as .mpg files.

For some titles we have added new 3D anatomy content as follows:

Interactive Head & Neck

Please note this is no longer available as an individual purchase as it has been superseded by 3D Head & Neck Anatomy with special senses and basic neuroanatomy DVD-ROM.

New 3D anatomy content includes additional views of the brain (brain, cerebrum and meninges), lacrimal apparatus and nasal and oral cavities.

Interactive Spine

New 3D anatomy views include cervical plexus, brachial plexus, ligamenta flava, posterior longitudinal ligament, thoracic spinal nerves, basivertebral veins, intervertebral foramina, lumbar plexus, sacral and coccygeal plexuses, spinal cord, cross section of the spinal cord and tracts of the spinal cord.

PLUS it now includes all the content from Interactive Spine: Clinical Edition with clinical text articles with links to hundreds of clinical slides – 3D illustrations, movie clips, and MRI images - covering the following topics: Infections, Deformities, Tumours, Rheumatoid Arthritis and Spondyloarthropathies, Cervical Spine Disease, Metabolic Disease, Lumbar Back Ache and Trauma.

Interactive Shoulder

New 3D model views include shoulder joint coronal view, axilla, elbow joint sagittal, cubital fossa, brachial plexus, radial nerve, ulnar nerve, musculocutaneous nerve and median nerve.

Interactive Hand

Now includes all the content from the 2nd edition including new anatomy on all main model views - lymphatics of the forearm and hand, ligament attachments, fascia, capsules, synovial sheaths, cutaneous innervation plus 8 new dissection style views 3D anatomy views, for example carpal tunnel, cubital fossa, anterior and posterior forearm and 17 muscle function animations including flexion, extension, opposition, pronatio and supination.

Interactive Hip

New 3D model views include 14 new views of the individual nerves in the lumbar plexus, and sacral and coccygeal plexuses including femoral nerve, saphenous nerve, tibial nerve and pudendal nerve PLUS 2 fantastic animated sequences showing hip impingement for CAM and Pincer.

Interactive Knee

New 3D model views include popliteal fossa and tibial menisci.

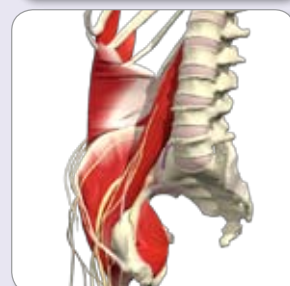
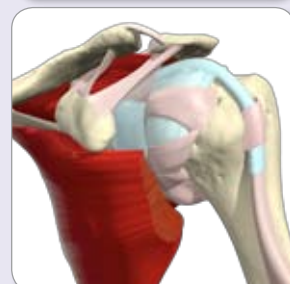
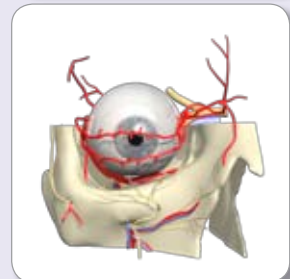
Interactive Foot & Ankle

New 3D anatomy views include surface features of the leg, dorsal view of the foot, tarsal bones and dissections of the sole of the foot

The modules from the 3D Human Anatomy Regional Edition no longer include a MCQ section or quiz.

Technical Specification:

PC: Microsoft XP, Vista
Mac: OSX 10.3, 10.4, and 10.5



ISBN: 978-1-907061-08-0

**If you have any further queries regarding the content of this DVD-ROM,
please contact us emma@primalpictures.com**