



The **Interactive Knee** presents full knee anatomy in three dimensions. The model is based on a very high resolution interactively labeled MR. It is the ultimate educational, training and presentation resource for all those involved in knee surgery and rehabilitation.

Each 3D model can be fully rotated, every visible structure labeled and layers of anatomy added or removed. The disc also contains spectacular animations that feature a biomechanical model of the knee in 3D and coverage of surgical procedures which include ACL and PCL ligament reconstruction, meniscus tears and their repair.

Save time! You have hundreds of stunning images and detailed information at your finger tips

Explain conditions quickly and effectively! Explain conditions and treatments easily using the 3D images and animations during consultations, aiding patient understanding

View anatomy in a new perspective! The user-friendly interactive functionality allows you to rotate any model, add or remove layers of anatomy and label any visible structure



3D ANATOMY:

Choose from 9 3D anatomy views – all main views allow you to rotate and add or remove layers of anatomy from the models.

Knee

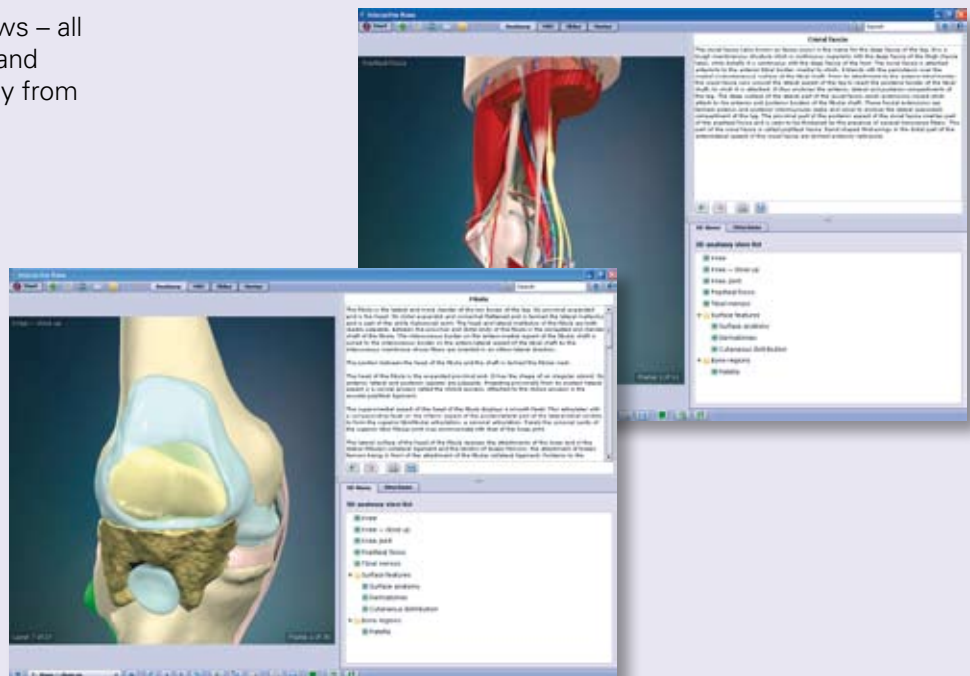
- Overview of the knee
- Knee – close up
- Knee joint
- Popliteal fossa
- Tibial menisei

Surface features

- Surface anatomy
- Dermatomes
- Cutaneous distribution

Bone Regions

- Patella



ISBN: 9781907061004 Publication date: April 2009 Price: \$299/£159/€240

Head Office

Primal Pictures Ltd

4th Floor Tennyson House, 159-165 Great Portland Street, London W1W 5PA. United Kingdom

Telephone: +44 (0) 20 7637 1010 Fax: +44 (0) 20 7636 7776

www.primalpictures.com

MRI Section:

- Correlates the 3D full-color model to the multi-planar MRI data in up to 21 layers. The user can cut through slices of the 3D model in any plane, and label any feature or structure.
- Included is a selection of MRI pathology (all labeled)

Slides:

Dissection slides – 19
Axial MR cadaver of the knee – 91
Clinical slides – 38
Knee MR (in 3 planes) - 59

Movies:

Heat sensitive view of the ACL flexion, sagittal view
Heat sensitive view of the PCL in flexion, posterior view
ACL footprint
Flexion and extension of the knee according to four-bar linkage, fixed links
Lateral Collateral Ligament: motion in flexion-extension
Medial Collateral Ligament: motion in flexion-extension
Notch impingement
Patellofemoral joint in motion and patellar tracking

PCL footprint
Relative motion in patellar over full flexion, from above
Screw home
Stabilizing role of the anterior cruciate ligament
Stabilizing role of the posterior cruciate ligament
Superimposed four-bar linkage: to follow joint flexion there are no fixed link lengths
Tibio-femoral joint motion: anterior view, patella removed
Tibio-femoral joint motion: medial view

Authors:

Paul Aichroth, Consultant Orthopaedic Surgeon, The Wellington Hospital, UK

Vishy Mahadevan, Reader in Anatomy, Royal College of Surgeons of England, UK

Justin M Harris, Dept. of Plastic Surgery, University College London Medical School, UK

David W Stoller, Director of Magnetic Resonance and Orthopaedic Imaging, California Pacific Medical Center, San Francisco; Medical Director, National Orthopaedic Imaging Associates, USA

WHAT'S NEW FOR THE 2009 RELEASE?

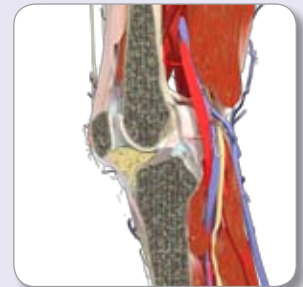
The changes between the present and the updated version are minimal.

An additional view has been added of the popliteal fossa, which allows you to add or remove up to 14 layers and the multiple choice questions and quiz have been removed.

Technical Specification:

PC: Pentium Processor, 32 MB Ram. 16 Bit or High Color Display Windows 98 or above including Vista
MAC: G4 Processor Upwards, 32 MB Ram. 16 Bit color. MAC OS X and above including Leopard

Single User Licence



If you have any further queries regarding the content of this DVD-ROM, please contact us emma@primalpictures.com