

INTERACTIVE SHOULDER DVD-ROM – 2009 RELEASE

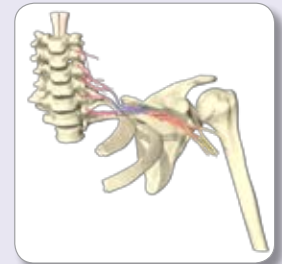


The ultimate reference tool on the human shoulder, the **Interactive Shoulder DVD-ROM** features a stunning 3D computer graphic model of all the anatomy relevant to the shoulder and elbow. Based on Visible Human Project Data, individual anatomical features can be seen in detail, high resolution and three dimensions, alongside clinical and dissection slides and movie clips.

Save time! You have hundreds of stunning images and detailed information at your finger tips

Explain conditions quickly and effectively! Explain conditions and treatments easily using the 3D images and animations during consultations, aiding patient understanding

View anatomy in a new perspective! The user-friendly interactive functionality allows you to rotate any structure, add or remove layers of anatomy and label any visible structure.



3D ANATOMY:

Choose from 19 3D anatomy views – all main views allow you to rotate and add or remove layers of anatomy from the models.

Thorax and Arm

Shoulder

- Shoulder
- Rotator cuff
- Shoulder girdle
- Shoulder joint – coronal section
- Shoulder joint – sagittal section
- Axilla

Arm

- Arm

Elbow

- Elbow
- Elbow joint – sagittal section
- Cubital fossa

Brachial plexus

- Brachial plexus
- Radial nerve
- Ulnar nerve
- Musculocutaneous nerve
- Median nerve

Surface features

- Surface anatomy
- Dermatomes
- Cutaneous distribution

SLIDES:

Biomechanics slides - 28

Dissection slides – 17

Axial MR of the shoulder – 22

Coronal oblique MR of the shoulder – 20

Sagittal oblique MR of the shoulder – 19

Radiology slides - 90

MOVIES:

Biomechanics movies – 7, including:

Abduction/Adduction of the humerus

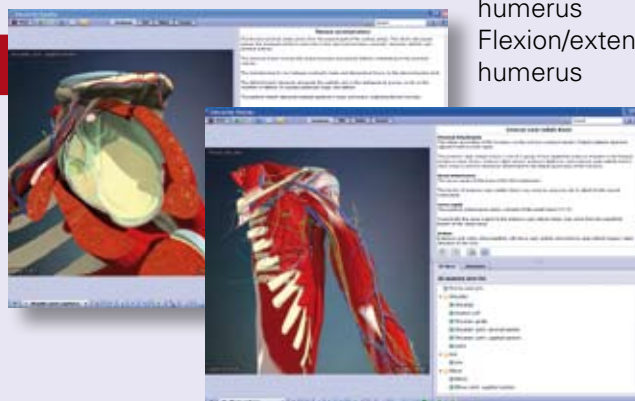
Internal/external rotation of the humerus

Flexion/extension of the humerus

Codman's paradox
Surface anatomy movies – 28

MRI SECTION:

Link the 3D model with MRI scans in 3 planes (axial, sagittal, coronal) and move through 22 slices of both the model and MRI.



Head Office:

Primal Pictures Ltd, 4th Floor Tennyson House, 159/165 Great Portland Street, London W1W 5PA

Tel: +44 (0) 20 7637 1010 Fax: +44 (0) 20 7636 7776

E-mail: email@primalpictures.com Website: www.primalpictures.com

What's new for the 2009 release?

The changes between the original 1999 edition and the updated version are minimal

There is a new interface on all our new re-released titles, which is more intuitive and user-friendly, with added functionality.

New views that have been added include:

Shoulder joint – coronal section

Axilla

Elbow joint – sagittal section

Cubital fossa

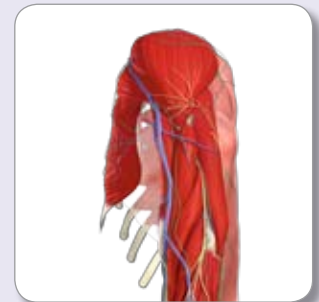
Brachial plexus

Radial nerve

Ulnar nerve

Musculocutaneous nerve

Median nerve



Authors:

Stephen Copeland, Consultant Orthopaedic Surgeon, Royal Berkshire Hospital, UK

Louis U Bigliani, Frank E Stinchfield Professor and Chairman, Department of Orthopaedic Surgery, Columbia-Presbyterian Hospital, USA

Roger Emery, Consultant Orthopaedic Surgeon, St Mary's Hospital, UK

Andrew Amis, DSc, Professor of Orthopaedic Biomechanics, Imperial College, London

Anatomy text: **Andrew Chippindale**, Royal Victoria Infirmary, Newcastle upon Tyne, UK

David W Stoller, Director of Magnetic Resonance and Orthopaedic Imaging, California Pacific Medical Center, San Francisco; Medical Director, National Orthopaedic Imaging Associates, USA

\$299/£159/€240

ISBN: 9781907061059

Publication date: July 2009

Technical Specification:

PC: Microsoft XP, Vista

Mac: OSX 10.3, 10.4, and 10.5

Single User Licence

If you have any further queries regarding the content of this DVD-ROM,
please contact us emma@primalpictures.com